

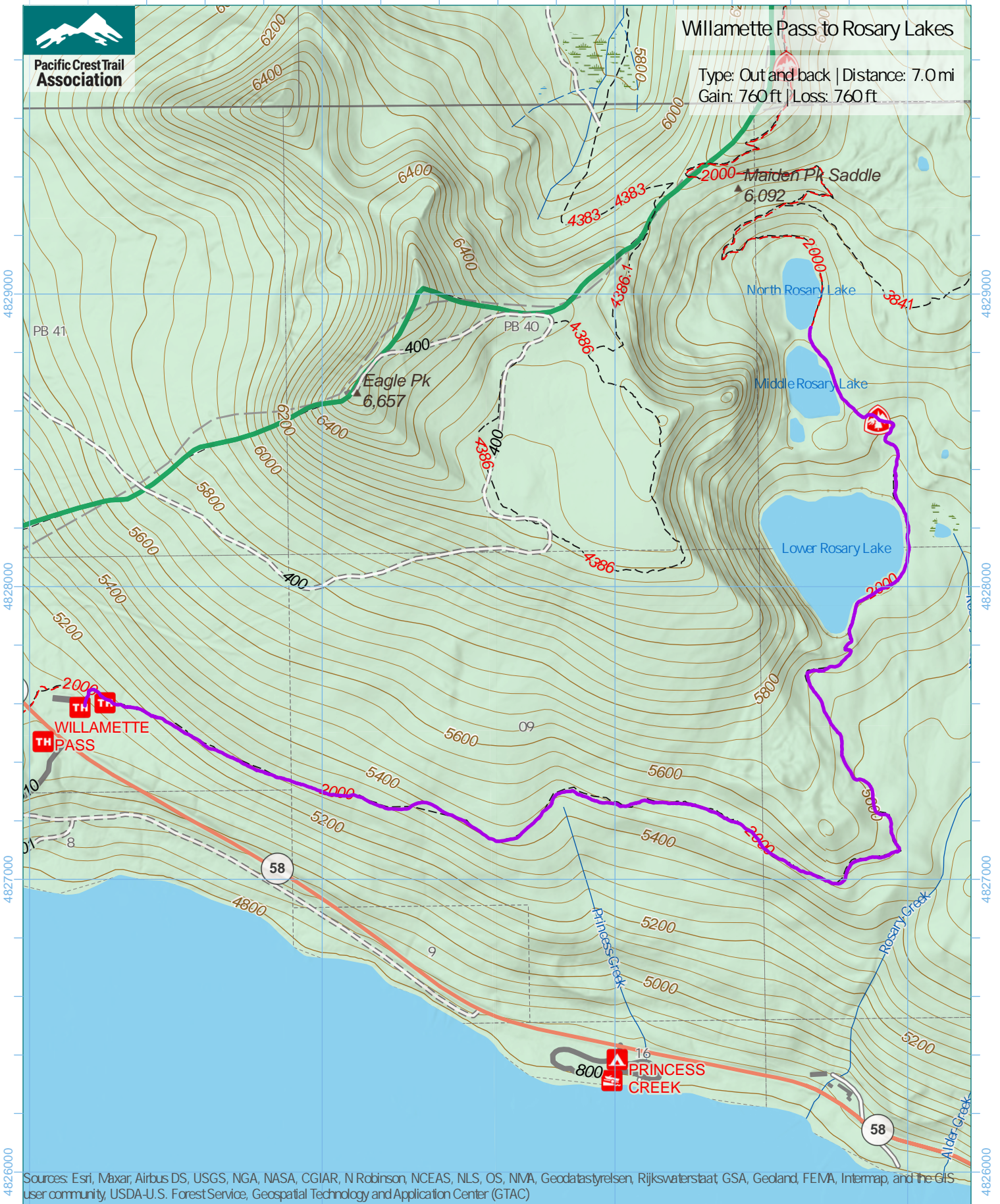
578000 579000 580000 581000



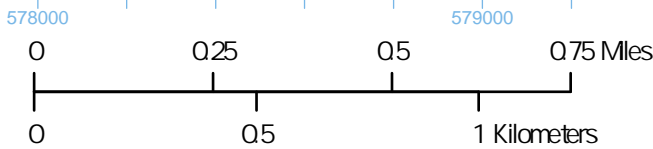
Pacific Crest Trail Association

Willamette Pass to Rosary Lakes

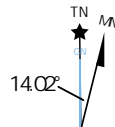
Type: Out and back | Distance: 7.0 mi
Gain: 760 ft | Loss: 760 ft



Sources: Esri, Maxar, Airbus DS, USGS, NGA, NASA, CGIAR, N Robinson, NCEAS, NLS, OS, NMA, Geodatastyrelsen, Rijkswaterstaat, GSA, Geoland, FEMA, Intermap, and the GIS user community, USDA-U.S. Forest Service, Geospatial Technology and Application Center (GTAC)



1 inch equals 1,417 feet
1:17,000
WGS 1984 UTM Zone 10N



Trip data by PCTA
Basemap by US Forest Service
Contour interval: 40ft

578000 579000 580000 581000

4826000

4826000

4827000

4827000

4828000

4828000

4829000

4829000